



Democratic Services

Location: Phase II
Ext: 0692
DDI: 01895 25 0692
My Ref: NF

**To: COUNCILLOR JOHN RILEY
CABINET MEMBER FOR PUBLIC SAFETY AND
TRANSPORT**

c.c. All Members of Executive Scrutiny Committee
c.c. Perry Scott, Residents Services
c.c. Kevin Urquhart, Residents Services
c.c. Chairman of the Residents, Education and
Environmental Services Policy Overview Committee
c.c. Ward Councillors for Botwell
c.c. Conservative and Labour Group Offices
(inspection copy)

Date: 26 February 2021

Non-Key Decision request

Form D

Dawley Parade & Dallega Close, Hayes - Results of Informal Consultation for a Possible Parking Management Scheme & Stop & Shop Parking Scheme

Dear Cabinet Member

Attached is a report requesting that a decision be made by you as an individual Cabinet Member. Democratic Services confirm that this is not a key decision, as such the Local Authorities (Executive Arrangements) (Meetings and Access to Information) (England) Regulations 2012 notice period does not apply.

You should take a decision **on or after Monday 08 March 2021** in order to meet Constitutional requirements about publication of decisions that are to be made. You may wish to discuss the report with the Corporate Director before it is made. Please indicate your decision on the duplicate memo supplied, and return it to me when you have made your decision. I will then arrange for the formal notice of decision to be published.

Neil Fraser
Democratic Services Officer

Title of Report: Dawley Parade & Dallega Close, Hayes - Results of Informal Consultation for a Possible Parking Management Scheme & Stop & Shop Parking Scheme

Decision made:

Reasons for your decision: (e.g. as stated in report)

Alternatives considered and rejected: (e.g. as stated in report)

SignedDate.....

Cabinet Member for Public Safety and Transport

Dawley Parade & Dallega Close, Hayes - Results of Informal Consultation for a Possible Parking Management Scheme & Stop & Shop Parking Scheme

Cabinet Member(s)	Councillor John Riley
Cabinet Portfolio(s)	Cabinet Member for Public Safety and Transport
Officer Contact(s)	Kevin Urquhart, Residents Services
Papers with report	Appendices A, B and C

HEADLINES

Summary	To inform the Cabinet Member on the results of the informal consultation carried out with residents and businesses of Dawley Parade and Dallega Close, Hayes to see if the majority would support the possible introduction of a parking management scheme and Stop & Shop parking scheme.
Putting our Residents First	This report supports the Council objective of Our People. Results of the consultation will be considered in relation to the Council's strategy for parking in residential areas.
Financial Cost	The estimated cost implication in relation to the recommendations set out in this report is £2,000.
Relevant Policy Overview Committee	Residents, Education and Environmental Services
Relevant Ward(s)	Botwell

RECOMMENDATIONS

That the Cabinet Member for Public Safety and Transportation:

- notes the responses received to the informal consultation for a possible introduction of a parking management scheme and Stop & Shop parking scheme in Dawley Parade and Dallega Close, Hayes; and
- approves for statutory consultation to be carried out on a detailed design as shown on Appendix B for a proposed parking management scheme and Stop & Shop parking scheme in Dawley Parade and Dallega Close, Hayes with operating times of 'Monday to Saturday 8am to 6.30pm'.

Reasons for recommendations

The recommendations reflect the majority of responses received to the consultation with residents and businesses. The recommendations also reflect the views of the local Ward Councillors.

Alternative options considered / risk management

The consultation with residents and businesses offered either the option of being included in a proposed parking management scheme and Stop & Shop parking scheme or for no changes to be made to the current parking arrangements.

Policy Overview Committee comments

None at this stage.

SUPPORTING INFORMATION

1. The Council has previously considered a petition that was submitted by the residents of Dawley Parade, Hayes asking the Council to consider the introduction of a parking management scheme to prevent non-residential parking. Following consideration of this petition, the request was added to the Council's Parking Scheme Programme for further investigation and consultation.
2. Dawley Parade forms a service road situated at the northern end of Dawley Road, Hayes not far from where the road transitions to Harlington Road. The Parade consists mostly of residential properties but has several shops situated at the southern end of the service road. Midway along Dawley Parade there is a cul-de-sac called Dallega Close which already benefits from some double yellow lines to ensure clear access is maintained to the garages and the residential properties at the end of the road. Immediately to the south of Dawley Parade, at junction of Princes Park Lane, there are 18 flats within Margaret Ramadan House. Although these flats have some off-street parking located to the rear, it is possible that these residents also utilise Dawley Parade for some on-street parking. Attached as Appendix A to this report is a location plan.
3. Given the impact a scheme would have on the residents of Dallega Close and Margaret Ramadan House, following discussion with the local Ward Councillors it was considered appropriate to include these residents within the same consultation as Dawley Parade so that, if a scheme was progressed further, these residents could also be included.
4. To provide a good turn of parking spaces for visitors to the shops at the southern end of Dawley Parade, officers suggested incorporating a Stop & Shop parking scheme into the proposed scheme design. Usually within a Stop & Shop parking scheme, the first half hour of parking is free upon obtaining a ticket from a ticket machine with charges thereafter. These sorts of schemes have been introduced at shopping parades across the Borough and work well in providing short stay parking for customers to nearby businesses.

5. To assist residents and businesses in understanding how the scheme would be laid out within Dawley Parade and Dallega Close, officers developed a detailed design for a possible scheme at an early stage in the process. The intention being that this be shared at the informal consultation stage so that residents and businesses could decide if the scheme would be beneficial. Attached as Appendix B to this report is the proposed scheme design that was developed.
6. To establish if the majority of residents and residents would support the introduction of a scheme, they were delivered a letter, a plan of the proposed scheme design and questionnaire to ask if they would like their road to be included in a possible parking management scheme with a Stop & Shop parking scheme outside the shops.
7. Responses received to the consultation are tabulated in Appendix C. There was a total of 20 responses received from 61 consultation delivered, representing a return of 33%.
8. Around half of the residents of Dawley Parade took the opportunity to respond to the consultation and, of those, the majority have clearly indicated they would support the introduction of a scheme. Only one business took the opportunity to respond to the consultation. However, several of the business premises appeared to be closed possibly due to the ongoing COVID-19 pandemic.
9. Although there was a poor response rate from the residents of Dallega Close with only two out of the ten households responding, the two residents who did respond indicated they would also support a scheme. There was a mixed response from the abutting properties who were consulted in Prince Park Lane and only around a quarter of these residents took the opportunity to reply.
10. As part of the consultation, residents and businesses were given the choice of three different scheme operating times. The preferences indicated are shown on the lower section of the table attached as Appendix C. Of those who did indicate a preference, the majority supported operating times of 'Monday to Saturday 8am to 6.30pm'. Therefore, if a scheme is progressed to the next stage of formal consultation, it is recommended that it be proposed with these operating times.
11. The outcome of the informal consultation has been shared with the local Ward Councillors for this area. The Ward Councillors feel that, on reflection, the proposals for a possible parking management scheme and Stop & Shop parking scheme in both Dawley Parade and Dallega Close should be progressed to the next stage of formal consultation where residents and businesses will have a further opportunity to respond to the proposals. It is therefore recommended that formal consultation be carried out on the proposed scheme design as shown on Appendix B at the earliest opportunity.

Financial Implications

The estimated cost to carry out statutory consultation on detailed design for the proposed parking management scheme and Stop & Shop parking scheme in Dawley Parade and Dallega Close is approximately £2,000. The TfL funding allocation for 2021/22 is unconfirmed at this time and so

it is proposed to fund the cost of this consultation through the Parking Revenue Account (PRA) in the interim.

Should the Council decide to implement the proposed scheme following consultation, a suitable funding source will need to be identified.

RESIDENT BENEFIT & CONSULTATION

The benefit or impact upon Hillingdon residents, service users and communities?

To design and consult on parking measures requested by residents following consultation.

Consultation carried out or required

All of the residents and businesses of Dawley Parade, Dallega Close and abutting premises were informally consulted to see if they would like to consider being included in a proposed parking management scheme and Stop & Shop parking scheme. If the recommendations to this report are approved, formal consultation will be required to progress proposals for a scheme further.

CORPORATE CONSIDERATIONS

Corporate Finance

Corporate Finance has reviewed the recommendations to this report and concurs with the financial implications as set out above.

Legal

The Council has conducted informal consultation in relation to the potential introduction of a parking management scheme and Stop & Shop parking scheme. There are no legal impediments to the Council now conducting statutory consultation in accordance with the Local Authorities Traffic Orders (Procedure) (England & Wales) Regulation 1996. Should there be a decision that further measures are to be considered, then the relevant statutory provisions will have to be identified and considered at that time.

Infrastructure / Asset Management

None at this stage.

Comments from other relevant service areas

None at this stage.

BACKGROUND PAPERS

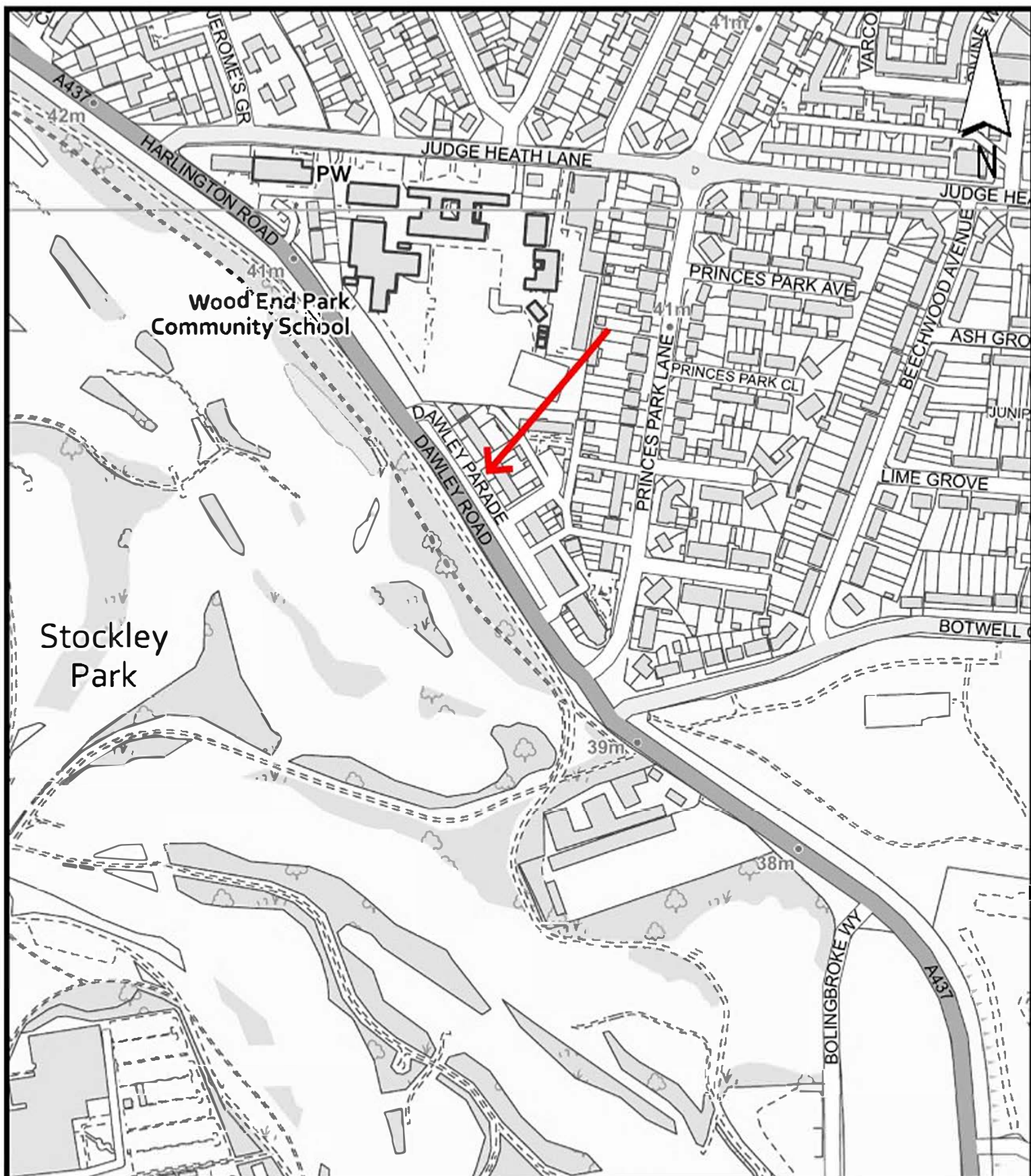
NIL.

TITLE OF ANY APPENDICES

Appendix A - Plan – Location plan of Dawley Parade

Appendix B - Plan – Detailed design for a possible parking management scheme and Stop & Shop parking scheme for Dawley Parade and Dallega Close

Appendix C - Table – Results of informal consultation with residents for a possible parking management scheme and Stop & Shop parking scheme



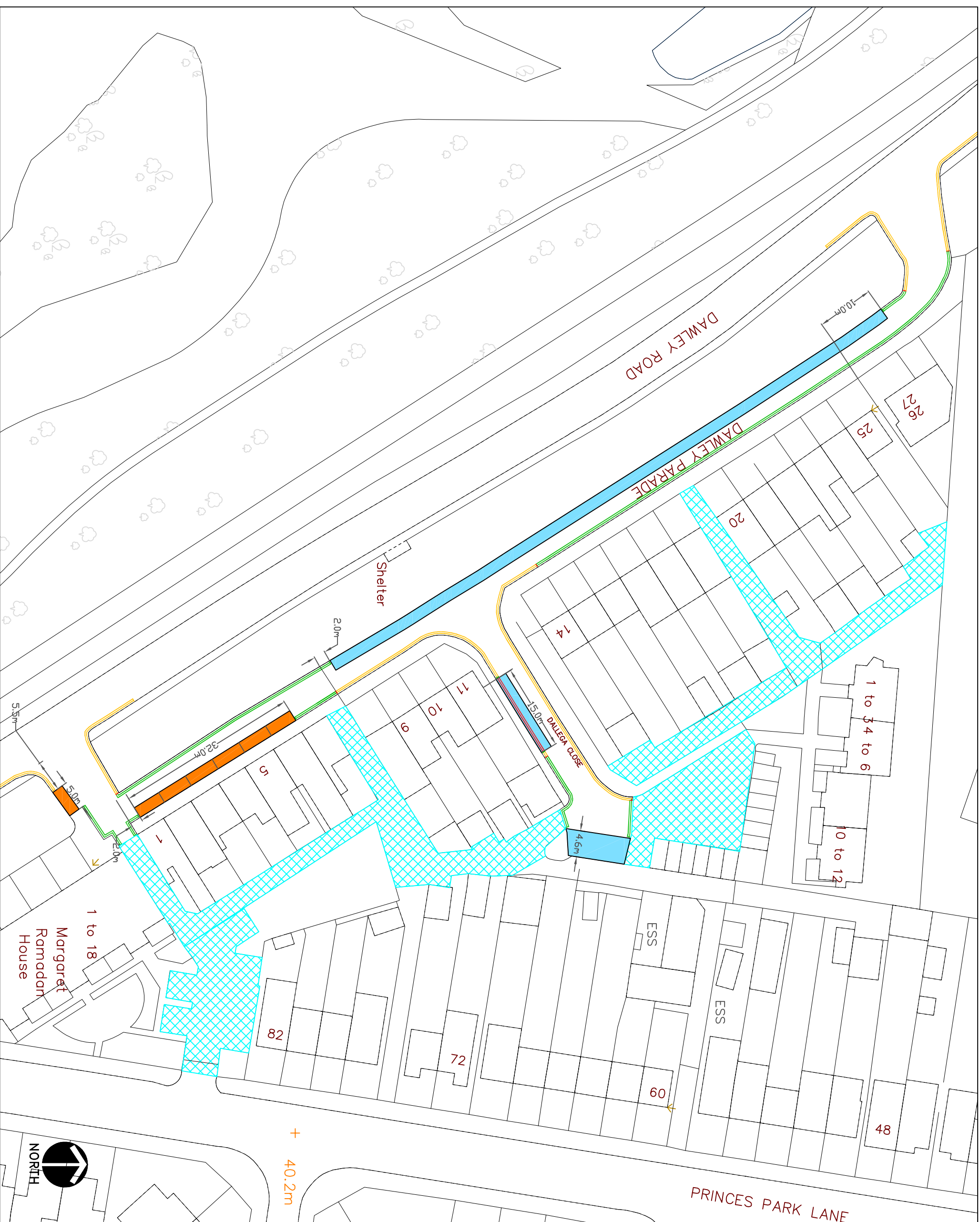
Dawley Parade, Hayes Location plan

Appendix A

January 2021

Scale 1:4,000

Appendix B



<p>KEY</p> <ul style="list-style-type: none"> EXISTING YELLOW LINE NEW DOUBLE YELLOW LINE & TERMINAL REMOVE ROAD MARKING PERMIT HOLDER ONLY BAY PAY & DISPLAY BAY EXTENT OF PRIVATE ROADS 	
<p>This map is based upon Ordnance Survey material with the permission of Ordnance Survey on behalf of the Controller of Her Majesty's Stationery Office @ Crown copyright.</p> <p>Unauthorised reproduction infringes Crown copyright and may lead to prosecution or civil proceedings.</p> <p>London Borough of Hillingdon 100019283 @ 2020</p>	
<p>HILLINGDON</p> <p>London</p> <p>Residents Services, 3N04, Civic Centre, High Street, UB8 1UW, London Borough of Hillingdon Tel: 01895 250 631</p>	
<p>Project Dawley Parade & Dallega Close, Hayes</p>	
<p>Description</p> <p>Proposed Parking Management Scheme</p>	
<p>NTS</p>	<p>Date 12 NOV 20</p>

Outcome of informal consultation for possible Parking Management Scheme & Stop and Shop Parking Scheme in the service road fronting Dawley Parade & Dallega Close, Hayes

	I would prefer no changes to the current parking arrangements.	I would support the introduction of a Parking Management Scheme as shown on the attached plan.	Void	Consultation documents returned	Consultation documents delivered	Response rate
Dallega Close	0	2	0	2	10	20%
Dawley Parade (Businesses)	1	0	0	1	6	17%
Dawley Parade (Residents)	1	11	0	12	25	48%
Princes Park Lane (Margaret Ramadan House & No. 84)	3	2	0	5	20	25%
Total	5	15	0	20	61	33%

If a Parking Management Scheme was introduced what times would you prefer that this operated?		
Monday to Friday 9am to 5pm	Monday to Friday 11am to Midday	Monday to Saturday 8am to 6.30pm
1	1	14